



BERGRIVIER MUNICIPALITY
BY-LAW RELATING TO THE
BERG RIVER ESTUARY USAGE ZONES

WE SERVE WITH PRIDE

Bergrivier Municipality has approved and adopted a By-Law Relating to the Berg River Estuary Usage Zones.

Important aspects addressed within this By-Law include the following:

- ♦ Operation of vessels on the river;
- ♦ Prohibited behaviour and Usage Zones
- ♦ Rules for boating; and
- ♦ Water-skiing and Jet ski where permitted.

(For full details of the By-Law, please visit Bergrivier Municipal Website: www.bergmun.org.za)

CONTACT US:

For any further information or enquiries regarding the Estuary, mail us at:

Environmental Officer:

Jouberta@bergmun.org.za or

CapeNature (Authorised officials on

behalf of the Municipality to administer

the Bergrivier Municipality By-law relating to the Berg River Estuary Usage Zone) at:

Landscape Manager:

cbeattie@capenature.co.za

and Marine Rangers Manager:

gmalherbe@capenature.co.za



Section 4 in the By-law:
Prohibited Behaviour

(1) No person shall operate a vessel on the estuary: -

- in contravention of any usage zone or management plan as determined by the Municipality;

- in a manner which the authorised officer regards as dangerous to the public or to the occupants of such vessel or in a manner calculated to endanger or damage any property or facility, regard being had to all the circumstances of the case.

(2) No person shall, without the prior written consent of the Municipality, hold or arrange any race, meeting, or regatta on the estuary.

(3) When the Municipality grants written consent in terms of subsection 4(2) above, it may set the conditions which it sees fit in the circumstances of a particular case, to ensure the safety of the public.

(4) All forms of powerboat racing on the water area of the estuary are prohibited.

(5) No person may use a vessel on the estuary as a place of permanent abode or overnighting.

(6) No Kiteboarding/ Kite surfing is allowed on the estuary.



Section 6 in the By-law:
Rules for Boating

Rules for Boating:

(1) No person shall leave a vessel unattended in the water area, unless it has been properly anchored or moored, according to subsection (2) below or removed to dry land at a safe height above the water level.

(2) No vessel may be moored or launched at any place other than that indicated or approved by the Municipality and an authorised officer. The Municipality may move any vessel or moor it at any other place without the consent of the owner if such action is deemed to be in the public interest. Such movement shall be at the sole risk of the owner of the vessel.



ZONES OF THE BERG RIVER ESTUARY:
SEE MAPS BELOW

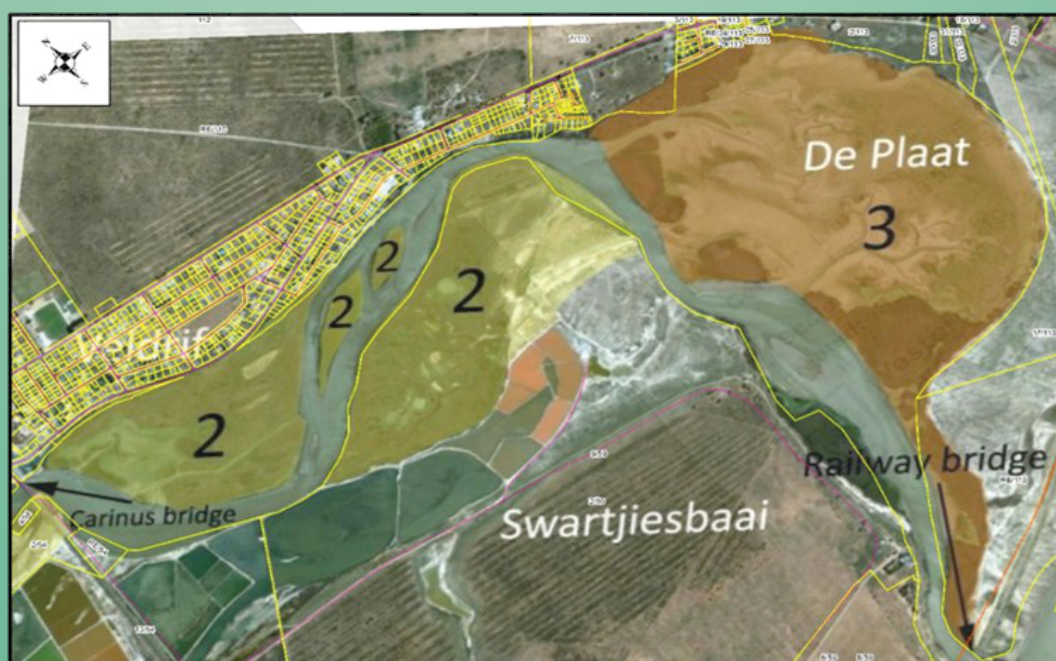


(3) No person may use any slipway for any purpose other than launching or retrieving a vessel; all other activities within 15 meters of the slipway is therefore prohibited, unless with written consent from the Municipality.

(4) No person may operate or control a vessel between one hour after sunset and one hour before sunrise up-river in the No wake zone and in the direction of Velddrif Yacht Club, where the river narrows directly ahead of the yacht club in Waterkant Street towards Zone 3 and 4, unless in an emergency and provided that they use navigation lights during low light, misty or dark conditions.

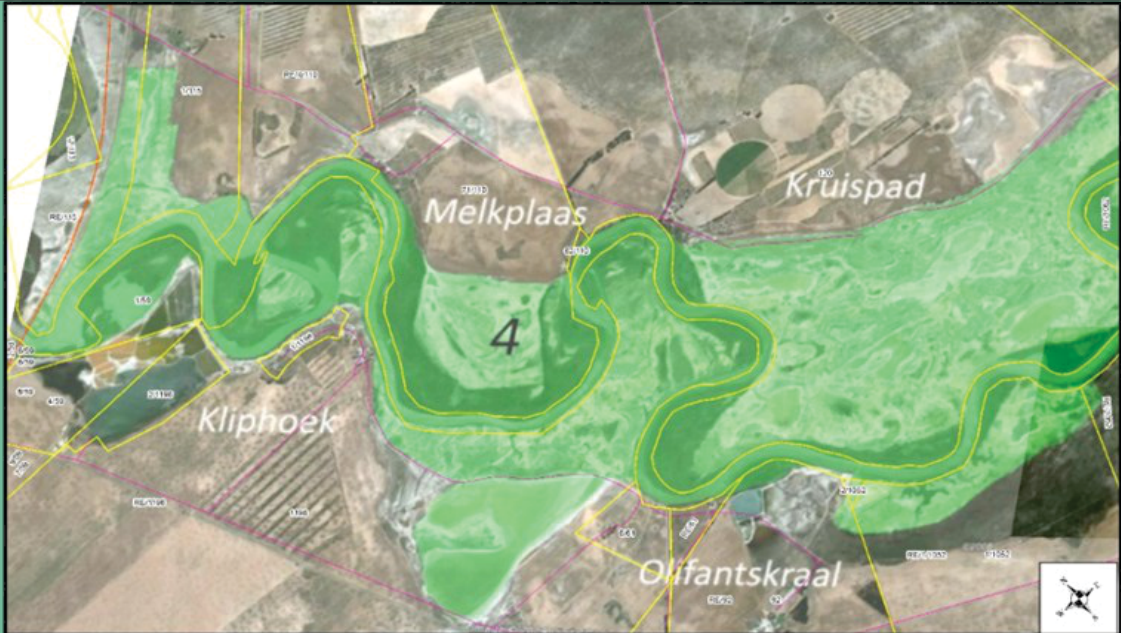
Section.5 in the By-law: Usage Zones:

4(a) Schedule 1, Zone 1: This water area covers the Old Mouth Lagoon consisting of large beds of eelgrass (Zostera). All forms of exploitation and motorised vessels are prohibited in this area.



4(b) Schedule 1, Zone 2: This water area covers the intertidal sensitive salt marsh adjacent to the Port Owen Marina, including the Port Owen Marina waterways, the salt works, and the Riviera Hotel. Motorised vessels used in this zone must comply with the requirements in this By-law, and adhere to the No wake zones (also the Conservation Area that includes Bokkomlaan) and all other relevant Provincial and National legislation. The Port Owen Marina is subject to POMA rules and regulations, as amended by POMA from time to time, which must be adhered to at all times in collaboration with this By-law. The rules referred to here should not be in conflict with the provisions of this By-law.

ZONES OF THE BERG RIVER ESTUARY: SEE MAPS BELOW



3

Section 5 in the By-law: Usage Zones

4(c) Schedule 1, Zone 3: This water area covers the deepest part of the river between the road and train bridge, including the whole of De Plaat and the adjacent salt marsh. Motorised vessels used in this zone must comply with the requirements in this By-law, and adhere to the No wake zones and all other relevant Provincial and National legislation. The De Plaat (Conservation Area) - is a prohibited entry area.

4(d) Schedule 1, Zone 4: This water area covers the supratidal salt marsh, reed and sedge marsh between the railway bridge and the Hopefield road bridge (Kersefontein bridge). Motorised vessels used in this zone must comply with the requirements in this By-law, and adhere to the No wake zones and all other relevant Provincial and National legislation.

4(e) Schedule 1, Zone 1 to 4: Pedestrian traffic is restricted to designated footpaths and boardwalks only.

THE BERG RIVER ESTUARY CONTACT REFERENCES:



Section 5 in the By-law: Usage Zones

5(8) Jet skis will only be permitted to travel to the open sea via and within the harbour jurisdiction area, from the Carinus bridge to the sea, and shall travel at minimum planing speed in a straight line only. No jet skis or water-propelled craft may operate above the Carinus bridge unless being used by a law enforcement body, the NSRI or in an emergency.

5(9) Water skiing is permitted between the Carinus bridge and the West / Main entrance of Port Owen Marina, and between the train bridge and the power lines only. Water skiing is prohibited everywhere else in the Berg River Estuary.



COMPLAINT / CONCERN	CONTACT PERSON / ORGANISATION
Compliance, pollution and Environmental matters related to the Berg River Estuary:	All complaints relating to contraventions to Environmental legislation and Municipal Estuary By-law relating to the Berg Estuary, such as salt marsh trampling, pollution, use of jet ski's outside permitted areas, speeding, entry into prohibited conservation areas such as De Plaat, etc. be reported to the CapeNature Berg River Estuary Hotline Number: 079 291 1440 or to Bergrivier Law Enforcement Number: 083 272 4128
All illegal net fishing, illegal fishing or pollution within the harbour area of the Berg River Estuary to be reported to DFFE (Department of Forestry, Fisheries and the Environment) Fisheries section:	Laaiplek Harbour DFFE at Matthew Mahola at mmahola@dffe.gov.za or (022) 065 0087 or 082 783 0292 and William Shilubane at wshilubane@dffe.gov.za
Pollution complaints: DFFE	enviocrime@dffe.gov.za
Any matters relating to the CapeNature Marine Rangers:	Callum Beattie at cbeattie@capenature.co.za and Donnie Malherbe at gmalherbe@capenature.co.za
Odour nuisance from Fish Factories:	Send complaints directly to the West Coast District Municipal office in the form of an email, as soon as a bad odour is detected. C. Ganten-Bein at cgbein@wcdm.co.za and Celeste Minnaar at cjminnaar@wcdm.co.za and also sent to complaints@amawandlep.co.za

4