



# Port Owen Marina Authority (NPC)

Reg # 1999/010199/08

PostNet Suite 2 Private Bag X1 Vredenburg 7380 · Tel 022 783 0943 ·

Fax 0865462112

E-mail: poma@poma.co.za

## CHAIRMANS NEWSLETTER

DECEMBER 2024

### 1) POMA 2024 AGM:

The 2024 POMA AGM was held at the Port Owen Yacht Club on the 26<sup>th</sup> of October 2024. The meeting confirmed that member organizations had nominated/appointed their representatives as follows:

ORGANISATION	DIRECTOR	ALTERNATE DIRECTOR
POPOA	Herman Lambrechts	Jacie Joubert
POYC	Jean-Claude Latter	Jeff Hampton
AI&PB HOA	Rita de Bruyn	Gerhard van Rensburg
POWA	Derek Robinson	John de Meillon
WAG**	Vacant	Vacant
Bergrivier Municipality	Johan Moolman	NA

**\*\* WAG has not been able to convene an AGM and has thus not nominated a director or alternate director. This raises concern as originally this member body received support from the property owners on the East Bank of the Loop.**

### 2) POMA SPECIAL BOARD MEETING:

The AGM was followed by a Special Board meeting at which the Board voted the following people to fill the following positions:

ROLE	NAME
Chairperson (POMA Board)	Derek Robinson
Vice Chairperson (POMA Board)	Jean-Claude Latter
Chairman: POMA EXCO	Rita de Bruin
EXCO Vice Chairman: (Responsible for finance)	John de Meillon
Member responsible for operations	Derek Robinson

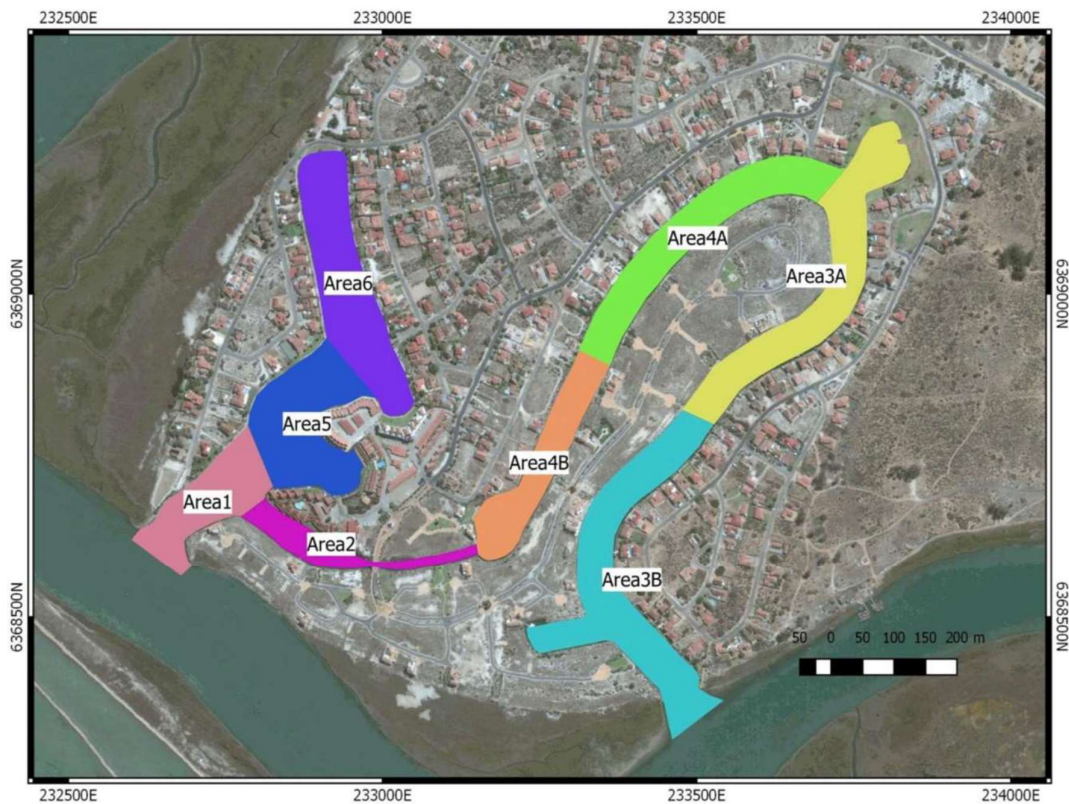
#### Directors

D Robinson (Chairman); JC Latter; H Lambrecht; J Moolman; R de Bruyn  
J de Meillon (Alt); J Hampton (Alt); J Joubert (Alt); G van Rensburg (Alt)

### 3) DREDGING PROJECT UPDATE:

The following key milestones and progress was made over the past few months:

- a) Unfortunately, our dredging authorizations prohibited us from dredging during the period 1 September to 30 November 2024.
- b) In December, we were allowed 8 dredge windows, which we used to the full. Planned dredging hours for these windows totaled 16 hours 10 minutes but by close monitoring of the river flow rate, which must be at least 0.43m/s we achieved 21 hours 15 minutes. Ten minutes were lost due to stoppages giving us an overall positive variance of 5 hours 5 minutes.
- c) A volume of 2 961.8 cubic meters of material was passed through the dredger during this period.
- d) The dredger and its pipework have been cleared for the holiday period and we plan to return this equipment on Monday 5<sup>th</sup> January.
- e) During October, the annual bathymetric survey of the river was done between a point 100m above our dredging discharge point and the first bend in the river (just after the houses downstream on the southern bank). When compared to last year's survey, there is no noticeable difference. These surveys are required by DFFE as part of our authorization.



PORT OWEN MARINA SURVEY AREAS

- f) On the 5<sup>th</sup> of December, Roy van Ballegooyen of WSP, gave a presentation to DFFE on POMA's behalf. WSP had been commissioned by POMA to model the effects of our dredging discharge on the Berg River between our discharge point and the mouth of the river. This presentation was attended by Rita de Bruin and myself. It is our impression that DFFE were happy with the outcome of the modelling. The main results being that the discharge of POMA's dredging material at the current rate and under the current conditions is not having an influence on the berg river below the POMA discharge point. The other point that WSP made was that further modelling was not necessary if POMA continued with their monthly river sampling regime. This is very important to POMA as this modelling is very costly.

#### **4) USING THE POMA WATERWAY**

Please ensure that all vessels, including Jet-Skis, comply with the SAMSA safety requirements. The Port Owen Waterway is a no wake zone, once in the river the Berg River Municipality Bylaws apply.

#### **5) SLIPWAY**

- a) Please report to the POMA office and complete the register BEFORE launching at POMA Slipway.
- b) Launching fees until 31 December 2024, will be R190.00 per launch.
- c) Launching fees from 01 January 2025 will be R200.00 per launch.

#### **6) RABIES WARNING:**

Please be very careful when near seals. Do not approach them and keep your dogs on leash.

#### **7) FISHING, NETTING & SWIMMING IN WATERWAYS:**

Fishing, netting & swimming is not allowed in the POMA waterways. Please report any of these activities to Cape Nature - WhatsApp (079) 291-1440.

#### *Municipal Emergency Numbers:*

Ambulance:	10177 / (022) 433-8700
Fire:	(060) 941-3598
Traffic:	(083) 272-4129
Law Enforcement:	(083) 272-4128
SAPS Laaiplek:	10111 / (022) 783-8020 / (022) 783-8022 / (022) 783-8025
Cape Nature	WhatsApp (079) 291-1440.

Wishing all residents and visitors a safe and happy festive season.

POMA CHAIRMAN  
DEREK ROBINSON